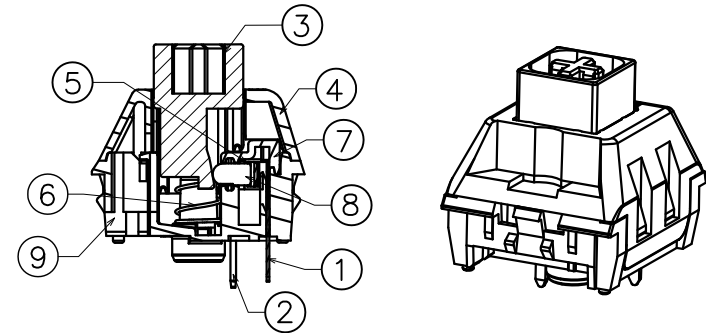
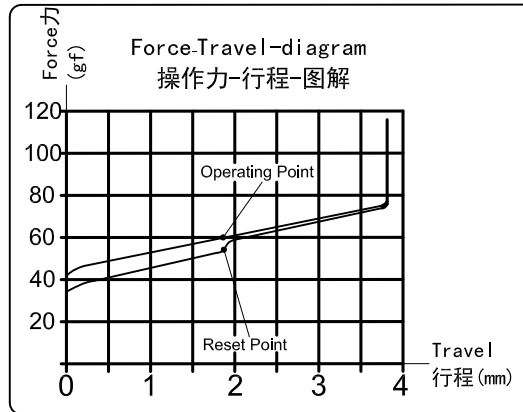
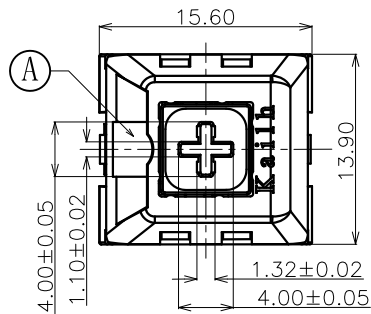


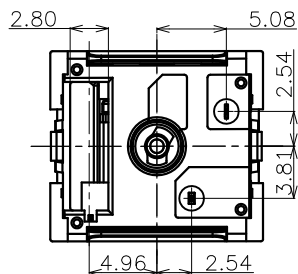
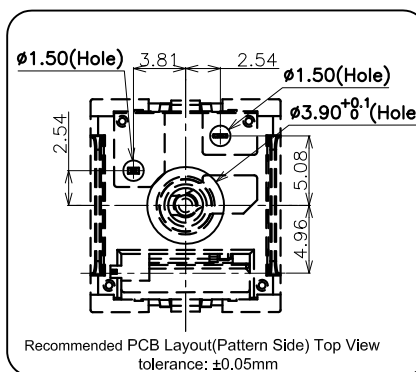
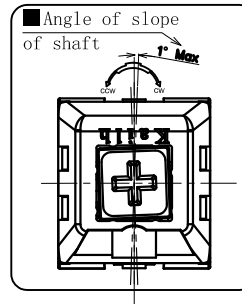
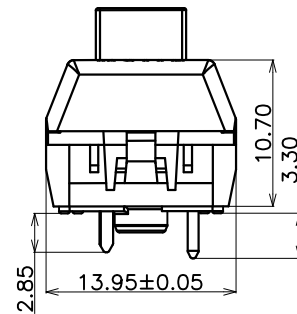
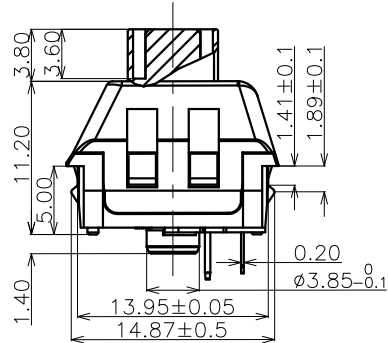
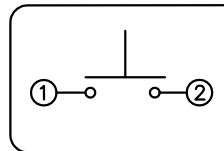
ABIDE BY ROHS


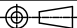
Black shaft



- Specification :
- 1. Rating: 12 VAC/DC max. 2 VDC min.
10mA AC/DC max. 10μA DC min.
 - 2. Contact Resistance: 200mΩ Max
 - 3. Insulation Resistance: 100MΩ Min. (DC100V)
 - 4. Withstand Voltage: AC100V (50-60Hz) for 1 minute
 - 5. Operation Force: 60±10gf
 - 6. Return Force: ≥15gf
 - 7. Conduction travel: 1.80±0.3mm
 - 8. Total travel: 3.60±0.3mm
 - 9. Electrical Life: 80,000,000 Cycles(min).
 - 10. Degree of protection: IP56(excluding the terminals)
- <Feel is allowed to have difference before and after life test>

■ SWITCH FUNCTION



| | | | | | | |
|----------------|------------------|------------|-------|---|---------------------------------------|---|
| ⑨ | Base | —— | 1 | PA66 | White | —— |
| ⑧ | Slider | —— | 1 | POM | Green | —— |
| ⑦ | Protecting Cover | —— | 1 | PA66 | Nature | —— |
| ⑥ | Spring | —— | 1 | Stainless Steel | Nature | —— |
| ⑤ | Contact | —— | 2 | Composite gold | —— | —— |
| ④ | Cover | —— | 1 | PC | Nature | —— |
| ③ | Keystroke | —— | 1 | POM | Black | —— |
| ② | Static Plate | —— | 1 | Brass | Plating NI | —— |
| ① | Movable Plate | —— | 1 | Copper Alloy | Nature | —— |
| ITEM | PART NAME | TER'NO. | QTY. | MATERIAL | FINISHING | REMARK |
| APPROVALS | | | DATE |  DONGGUAN CITY KAIHUA ELECTRONICS CO.,LTD Kailh | | |
| DRAWN | L.Zhang | 2016.12.12 | | | | |
| CHECKED | | | | TITLE: | PG1511F Keystroke Switch(Black shaft) | |
| APPROVALS | | | | PART NO. | CPG1511F01S05 | |
| TOLERANCES ARE | 30<L | ±0.30 | ANGLE | UNIT: mm | SCALE: 1:1 | PROJ:  |
| | 10<L≤30 | ±0.20 | | | | |
| | 5<L≤10 | ±0.15 | | | | |
| | L≤5 | ±0.10 | | | | |
| | | | ±2° | DRAWING NO. | KHA-PG1511F-005EN | SHEET 1 OF 1 |

| ECN-1801-02 | C | 2018.01.03 | MODIFIED COVER SHAPE WITH STAMPED A POSITION | L.Zhang | | |
|-------------|------|------------|--|---------|--------|--------|
| | B | 2017.02.08 | MODIFIED KEYSTROKE WITH STAMPED A POSITION | L.Zhang | | |
| | A | 2016.12.12 | NEW | L.Zhang | | |
| ECN NO. | REV. | DATE. | DESCRIPTION. | CHANGE. | CHECK. | APPRO. |