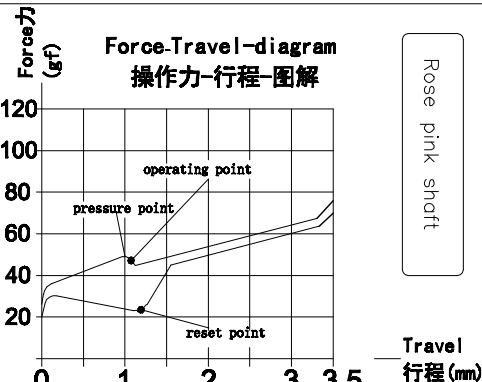
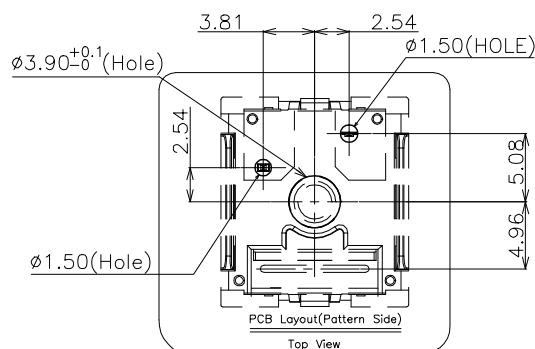
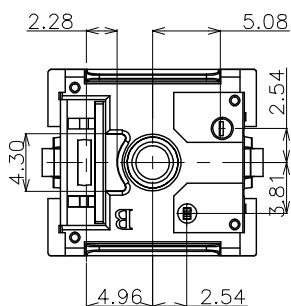
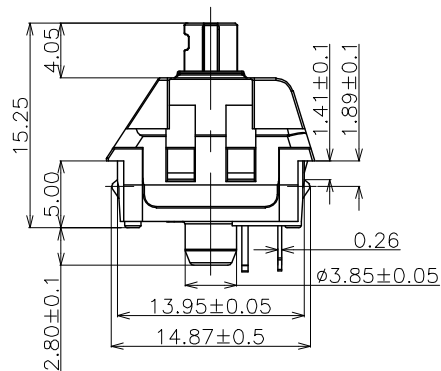
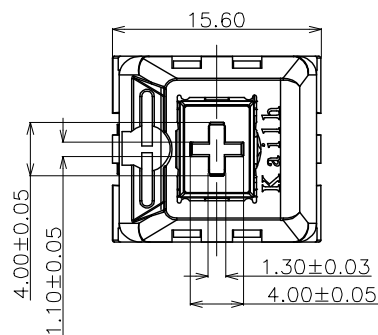
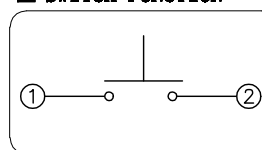


ABIDE BY ROHS

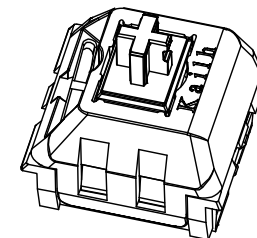
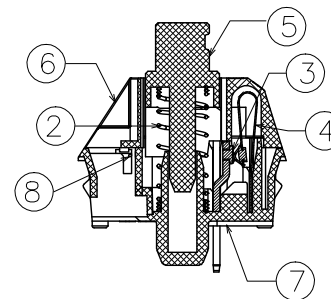
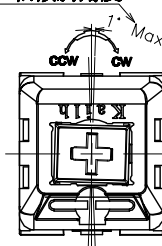
Rose pink shaft



SWITCH FUNCTION



轴倾斜角度



Specification :

- 1. Rating : 12V AC/DC max. 2V DC min. 10mA AC/DC max. 10 μ A DC min.
- 2. Contact Resistance : 100m Ω Max
- 3. Insulation Resistance : 100M Ω Min (DC500V)
- 4. Withstand Voltage : AC100V (50-60Hz) for 1 minute
- 5. Bounce Time : \leq 5msec (at 16 in/sec. actuation speed)
- 6. Resilience Force \geq 12gf
- 7. Operation Force : 50 \pm 10gf
- 8. Pre travel : 1.1 \pm 0.4mm
- 9. Total travel : 3.5 \pm 0.4mm
- 10. Operating Life : 70,000,000 Cycles (min).

<Feel is allowed to have difference before and after life test>

⑧	Spring	1	SUS 301	Nature	
⑦	Base	1	PA66	White	
⑥	contact	2	Composite gold		
⑤	Spring	1	Stainless Steel		
④	Cover	1	PC	Nature	
③	Keystroke	1	POM	Rose Pink	2044U
②	static plate	1	Brass	Plating Ni	
①	movable plate	1	Copper Alloy		

ITEM	PART NAME	TER'NO.	QTY.	MATERIAL	FINISHING	REMARK
APPROVALS			DATE	DONGGUAN CITY KAIHUA ELECTRONICS CO.,LTD		
DRAWN	YIJINPING		2017.04.13	Kaih		
CHECKED				TITLE:	PG1511 Keystroke Switch (Rose pink shaft)	
APPROVALS				PART NO.	CPG151101D215	

TOLERANCES ARE	30 \leq L 10 \leq A \leq 30 5 \leq A \leq 10 L \leq 5	\pm 0.30 \pm 0.20 \pm 0.15 \pm 0.10	ANGLE	UNIT: mm	SCALE: 1:1	PROJ:
			\pm 2'	DRAWING NO.	KHA-PG1511-	SHEET 1 OF 1

ECN NO.	A	REV.	DATE.	NEW DESCRIPTION.	CHANGE.	CHECK.	APPRO.
---------	---	------	-------	------------------	---------	--------	--------